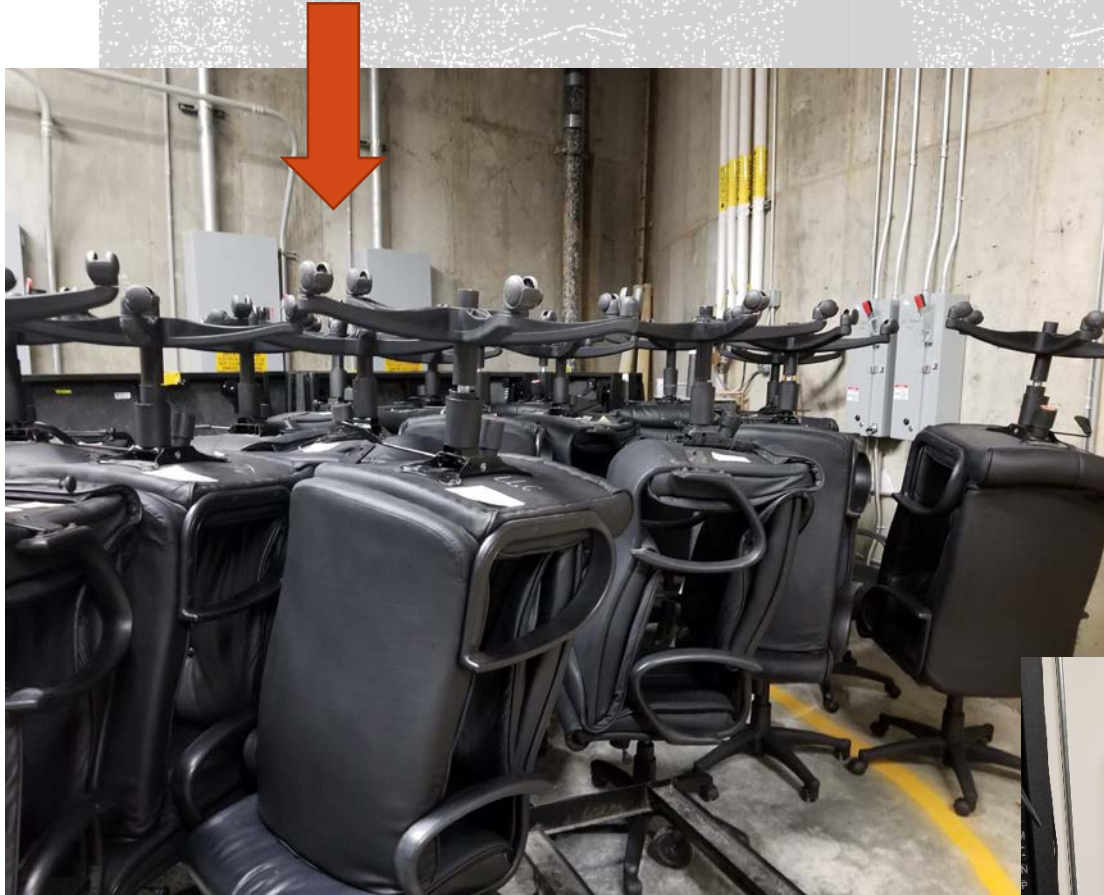


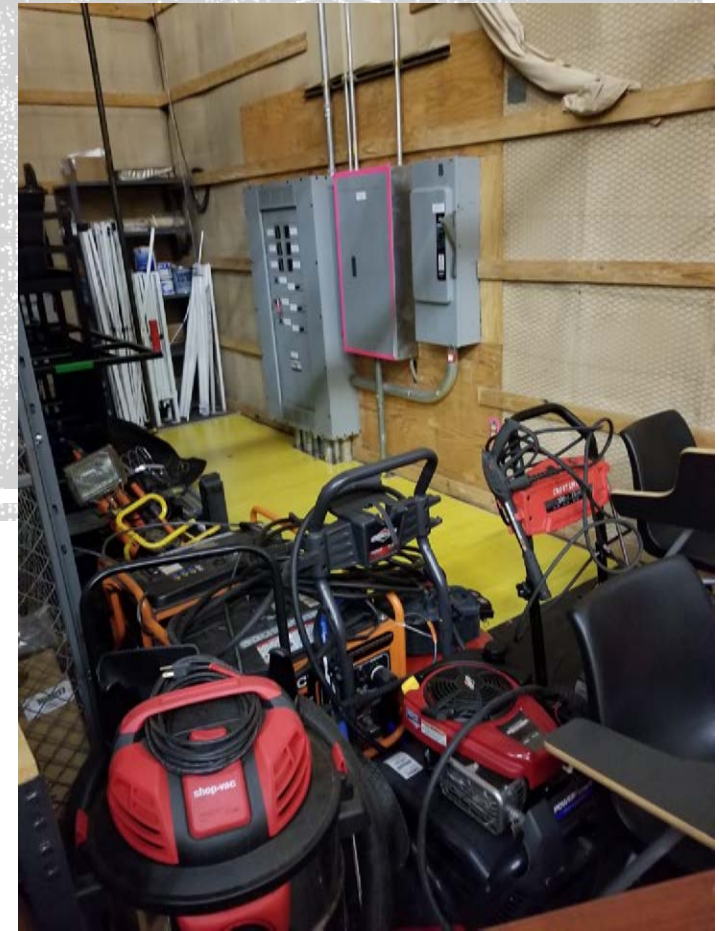
COMMON CAMPUS FIRE CODE VIOLATIONS

Blocking Electrical Panels



COMMON CAMPUS FIRE CODE VIOLATIONS

Blocking Electrical Panels



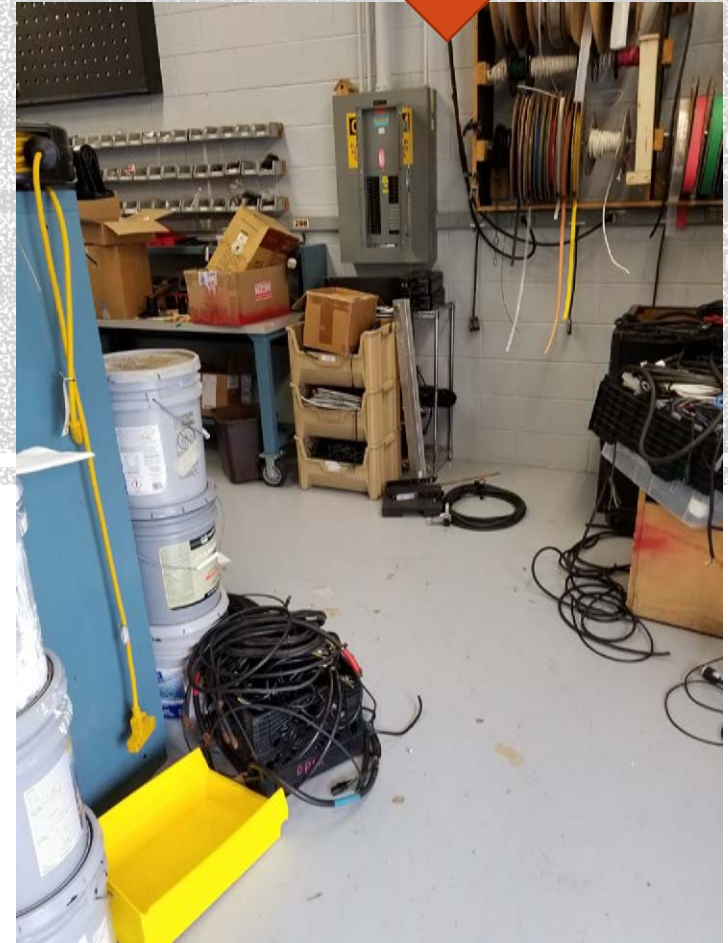
COMMON CAMPUS FIRE CODE VIOLATIONS

Blocking Electrical Panels



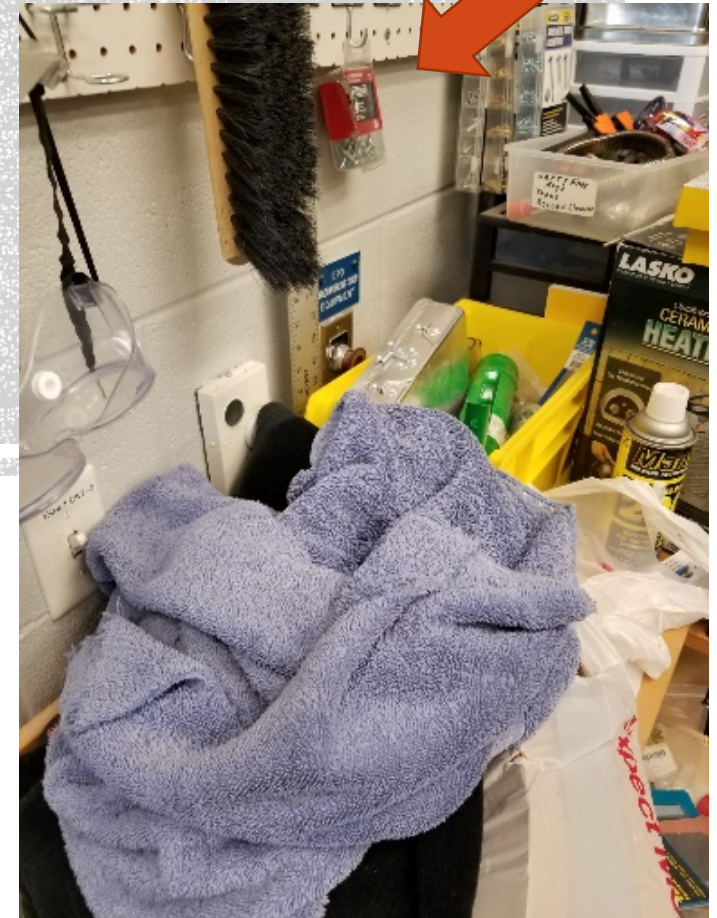
COMMON CAMPUS FIRE CODE VIOLATIONS

Blocking Electrical Panels



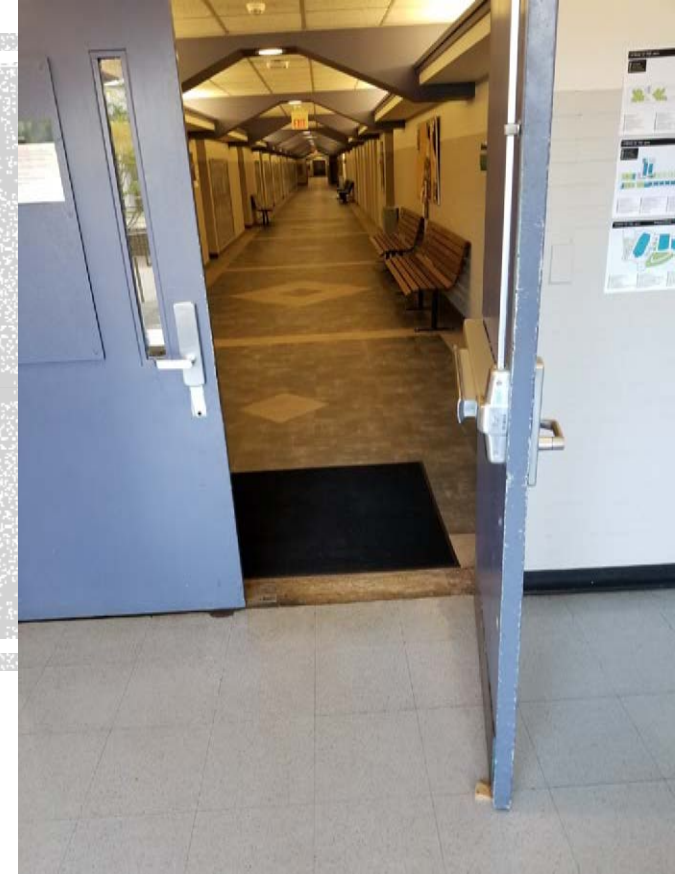
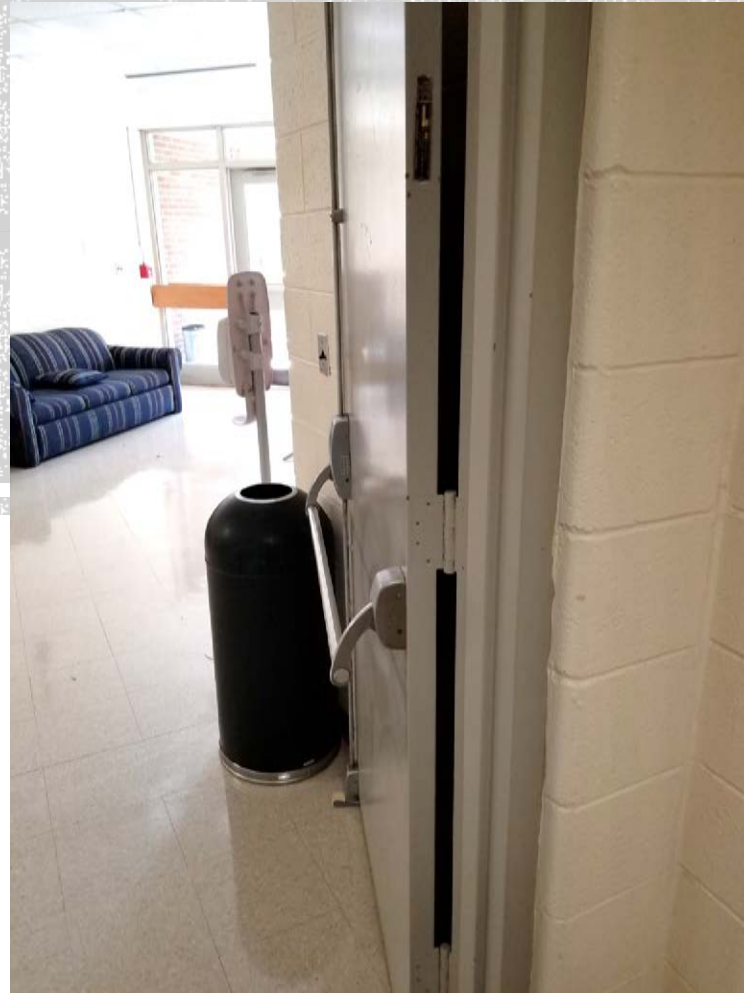
COMMON CAMPUS FIRE CODE VIOLATIONS

Blocking Electrical Disconnects and Emergency Stops



COMMON CAMPUS FIRE CODE VIOLATIONS

Propping open fire doors



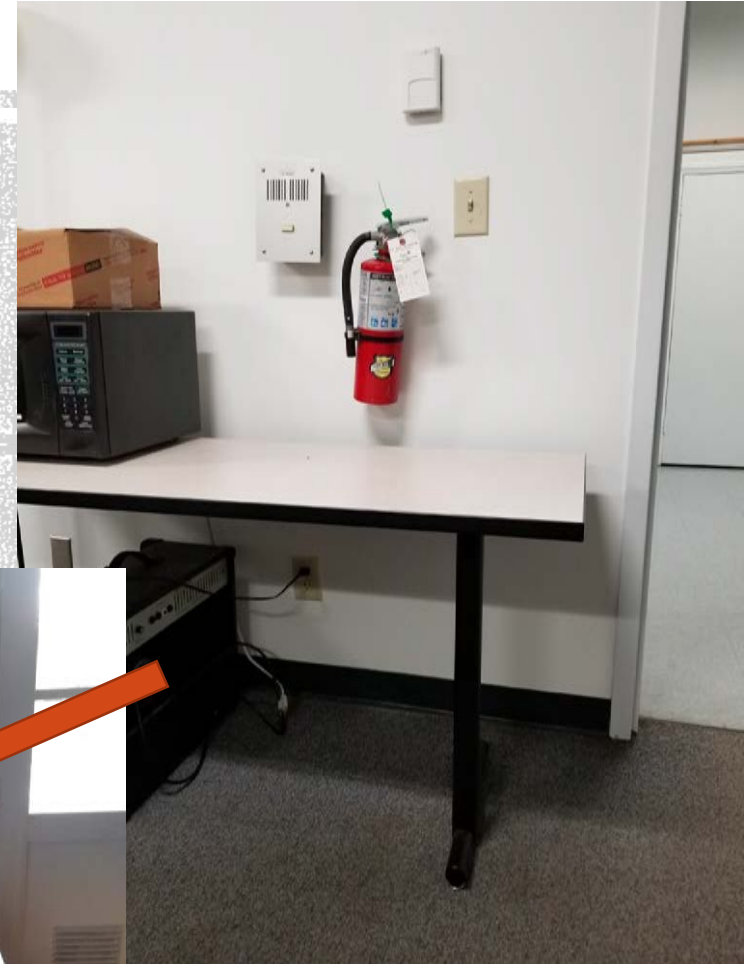
COMMON CAMPUS FIRE CODE VIOLATIONS

Propping open fire doors



COMMON CAMPUS FIRE CODE VIOLATIONS

Blocking Fire Extinguishers



COMMON CAMPUS FIRE CODE VIOLATIONS

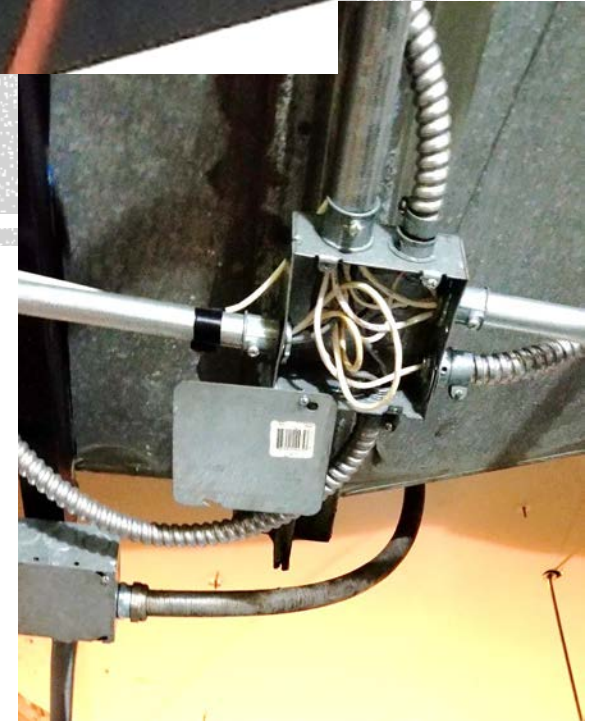
Blocking Fire Extinguishers



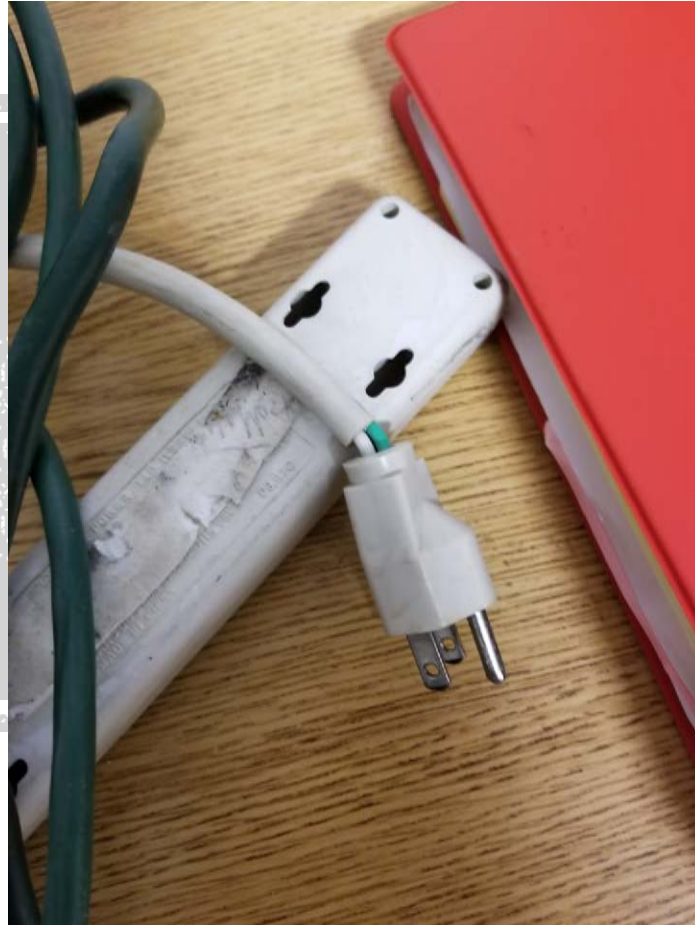
COMMON CAMPUS FIRE CODE VIOLATIONS



Improper Wiring



COMMON CAMPUS FIRE CODE VIOLATIONS



**Damaged
Plugs and
Cords**



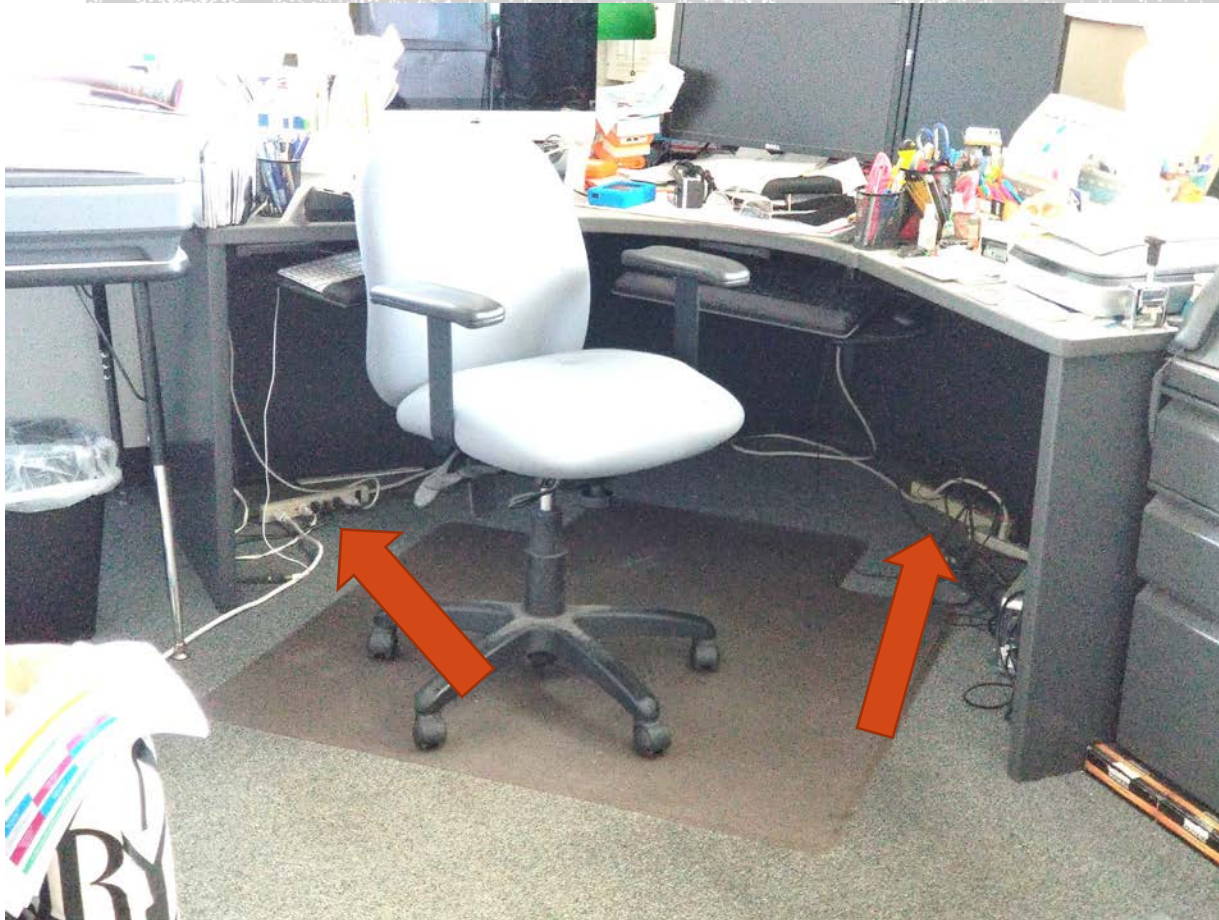
COMMON CAMPUS FIRE CODE VIOLATIONS

Unfused Multi-plug Adaptors



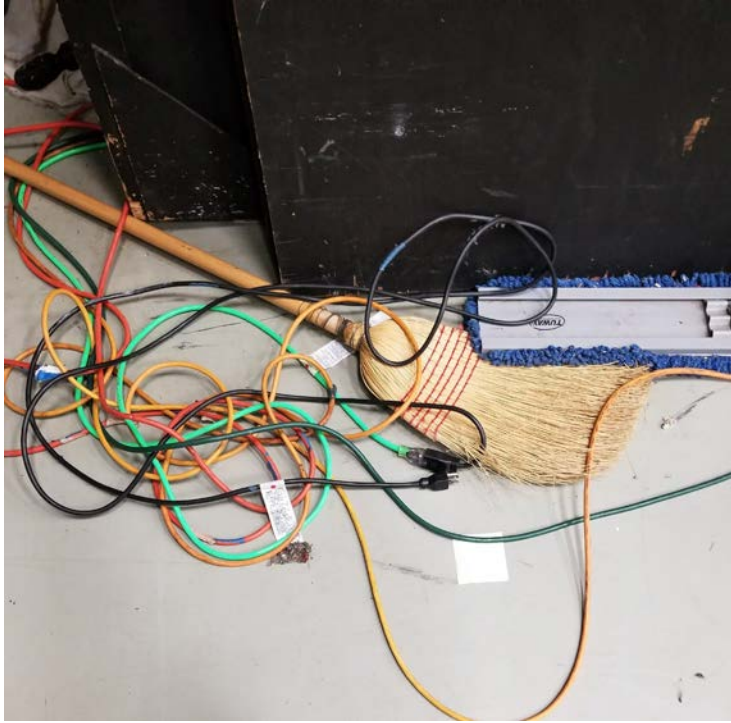
COMMON CAMPUS FIRE CODE VIOLATIONS

Piggybacked surge protectors



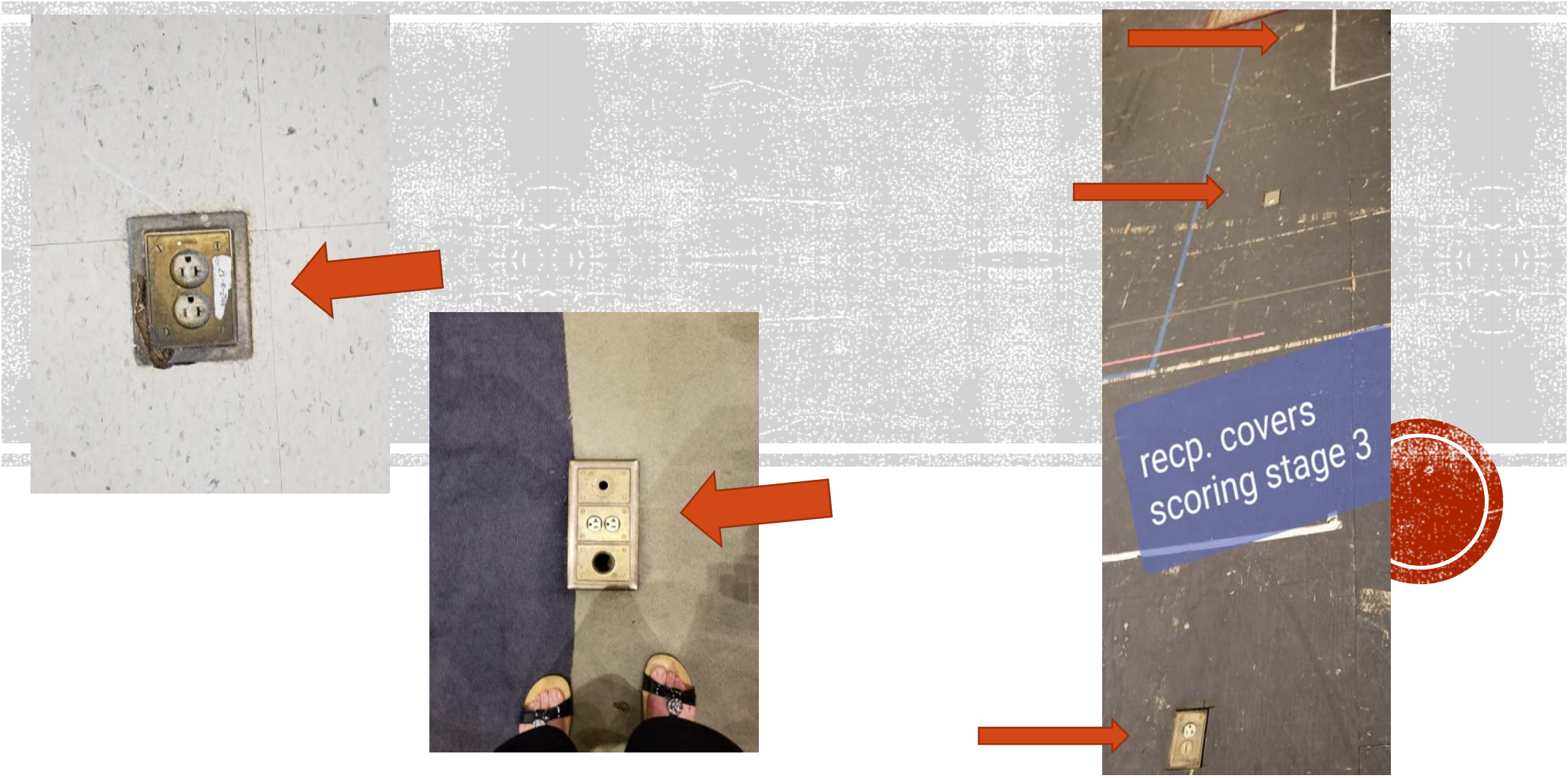
COMMON CAMPUS FIRE CODE VIOLATIONS

Improper Use of Extension Cords



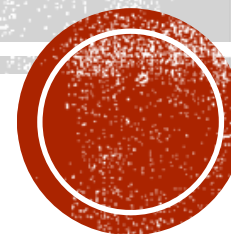
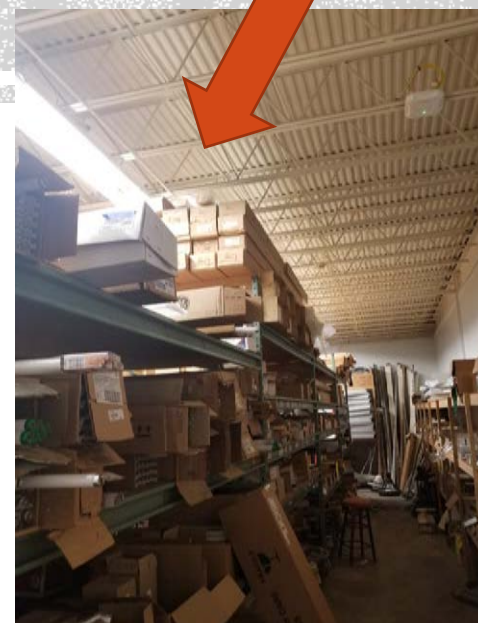
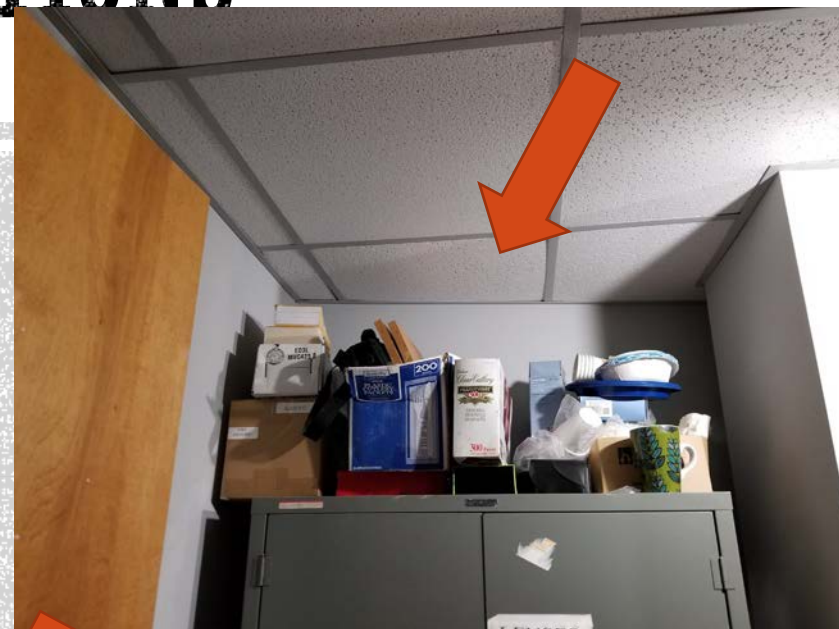
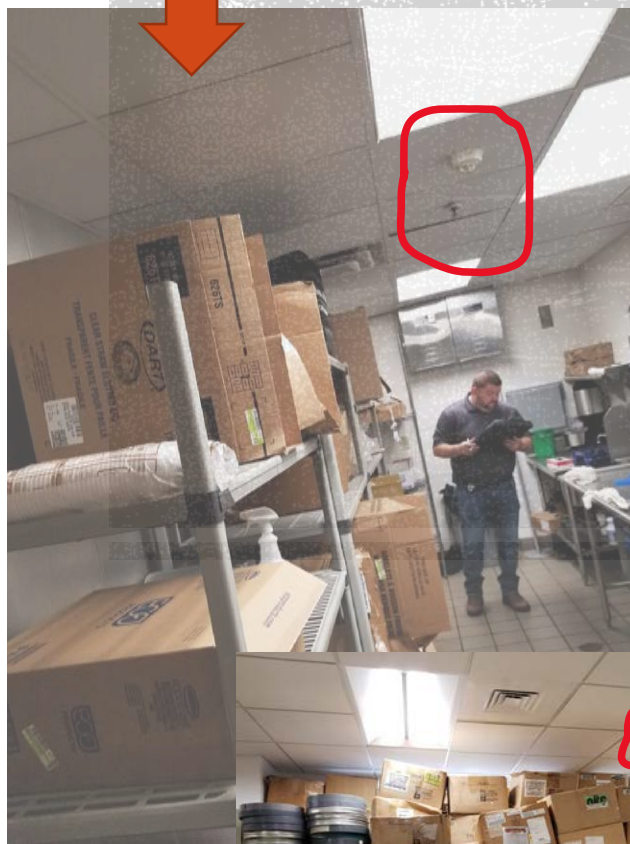
COMMON CAMPUS FIRE CODE VIOLATIONS

Missing Floor Receptacle Covers



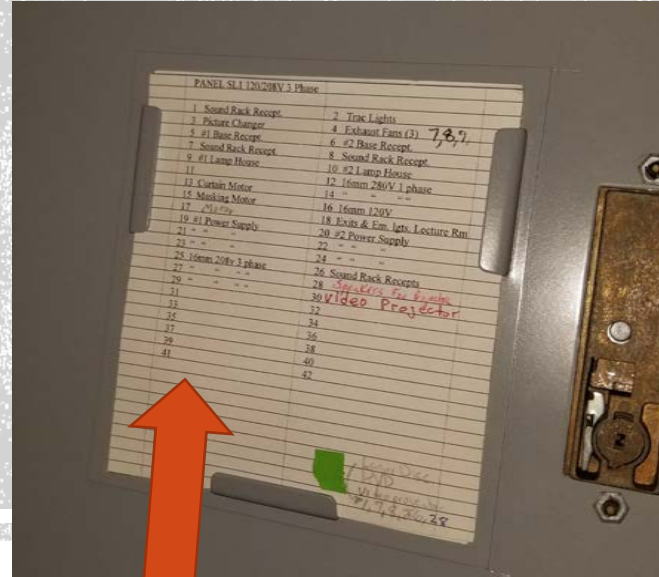
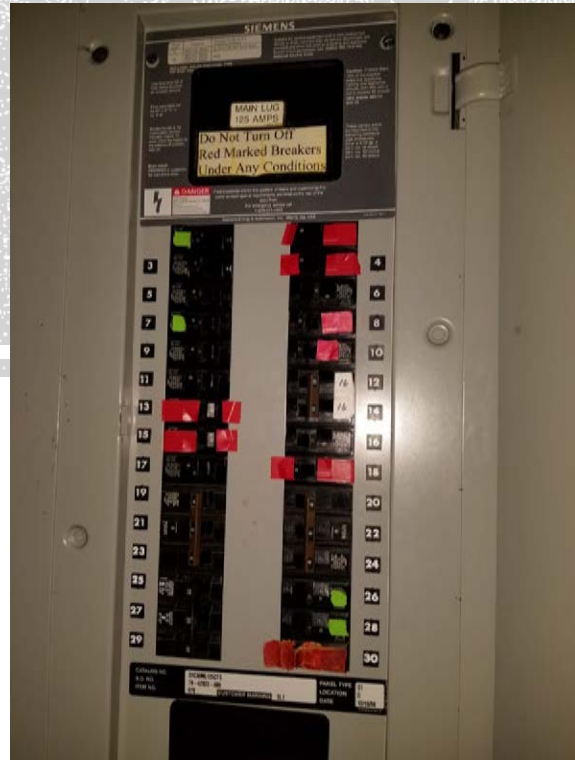
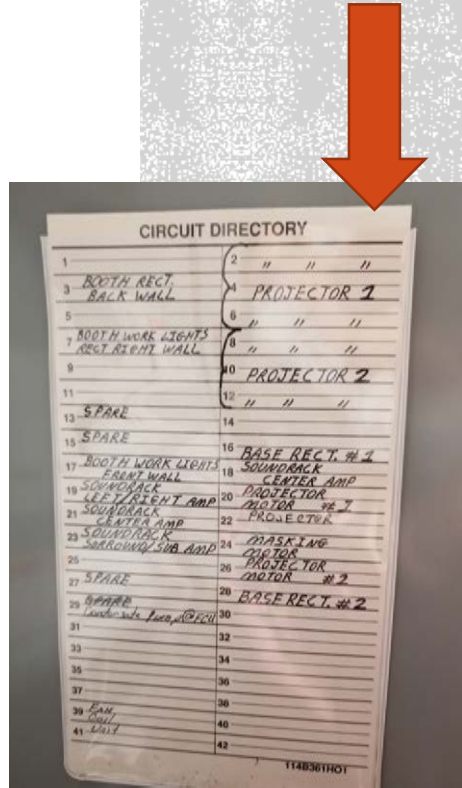
COMMON CAMPUS FIRE CODE VIOLATIONS

Storage too high to the ceiling



COMMON CAMPUS FIRE CODE VIOLATIONS

Incomplete Circuit Breaker Directories



COMMON CAMPUS FIRE CODE VIOLATIONS

Storage under Stairs



COMMON CAMPUS FIRE CODE VIOLATIONS

Missing Ceiling tiles



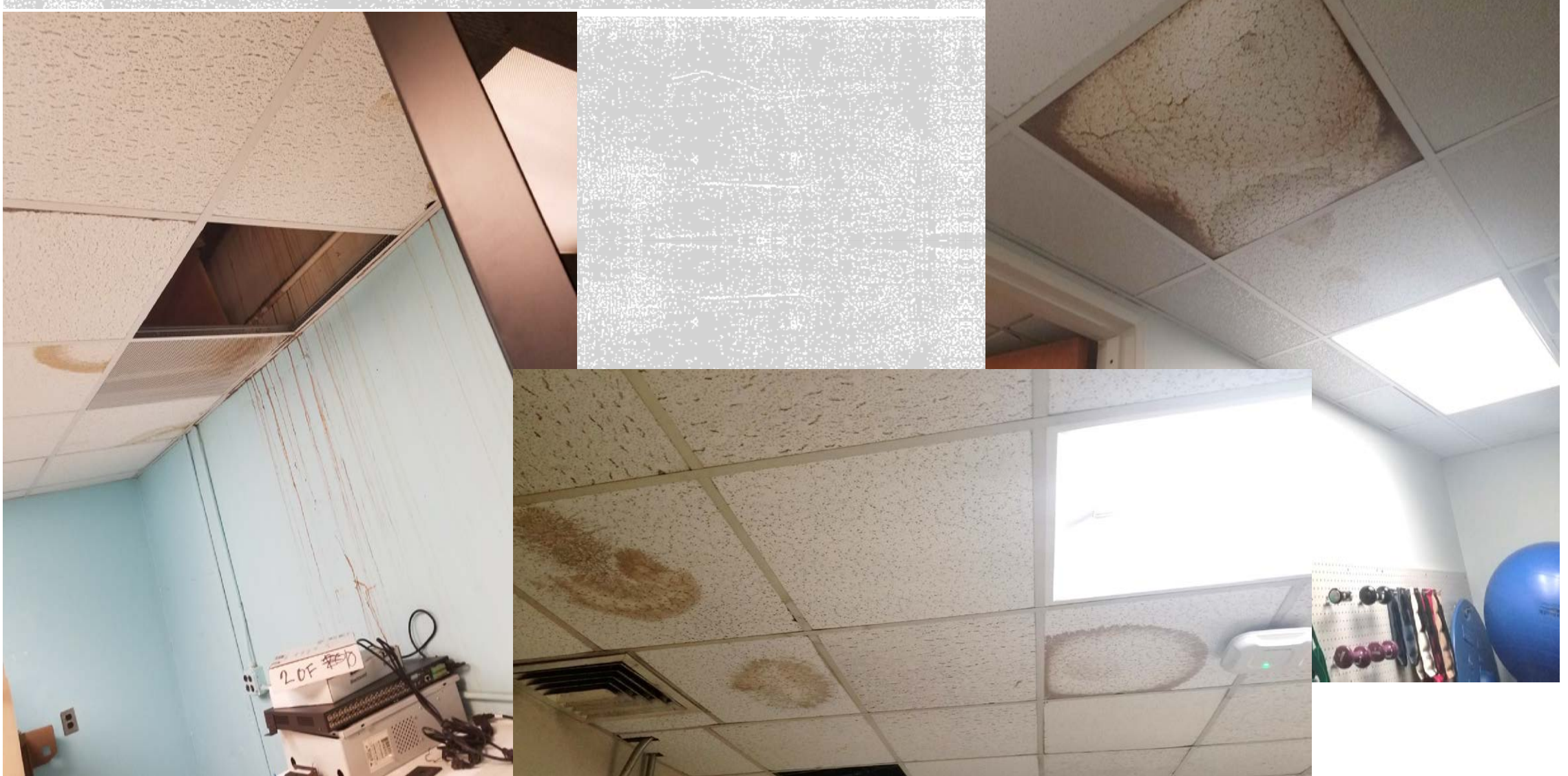
COMMON CAMPUS FIRE CODE VIOLATIONS

Stained Ceiling tiles



COMMON CAMPUS FIRE CODE VIOLATIONS

Stained Ceiling tiles



COMMON CAMPUS FIRE CODE VIOLATIONS

Blocked Exits



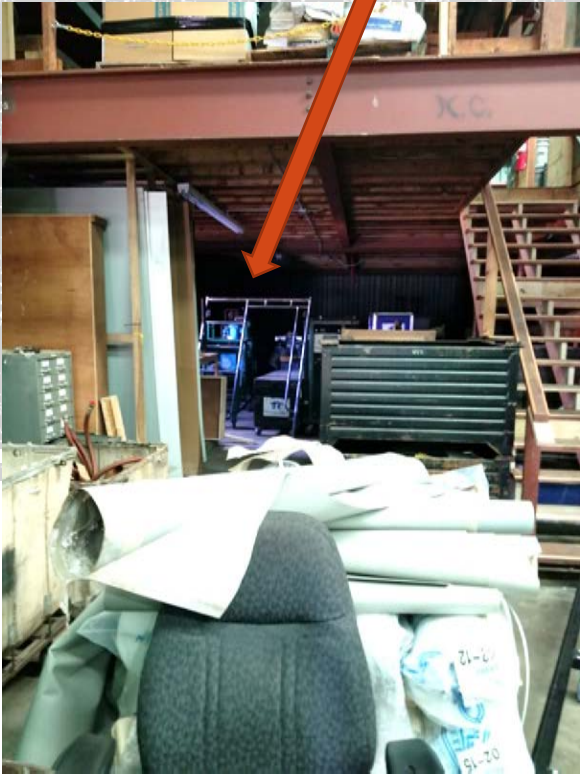
COMMON CAMPUS FIRE CODE VIOLATIONS

Blocked or Impeded Egress

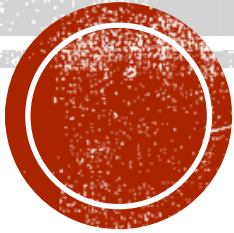
Exit



Exit



Exit



COMMON CAMPUS FIRE CODE VIOLATIONS

No GCI

Excessive Saw Dust

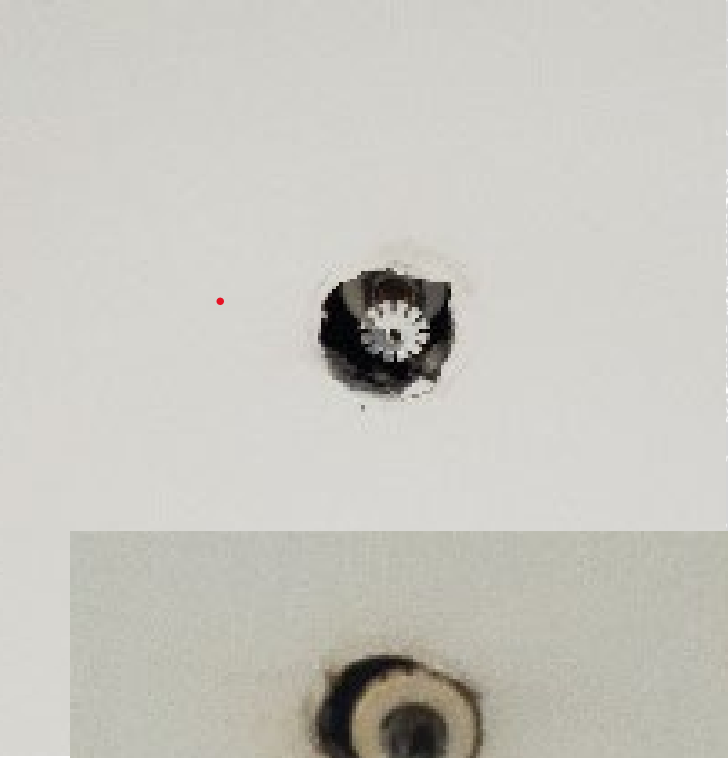
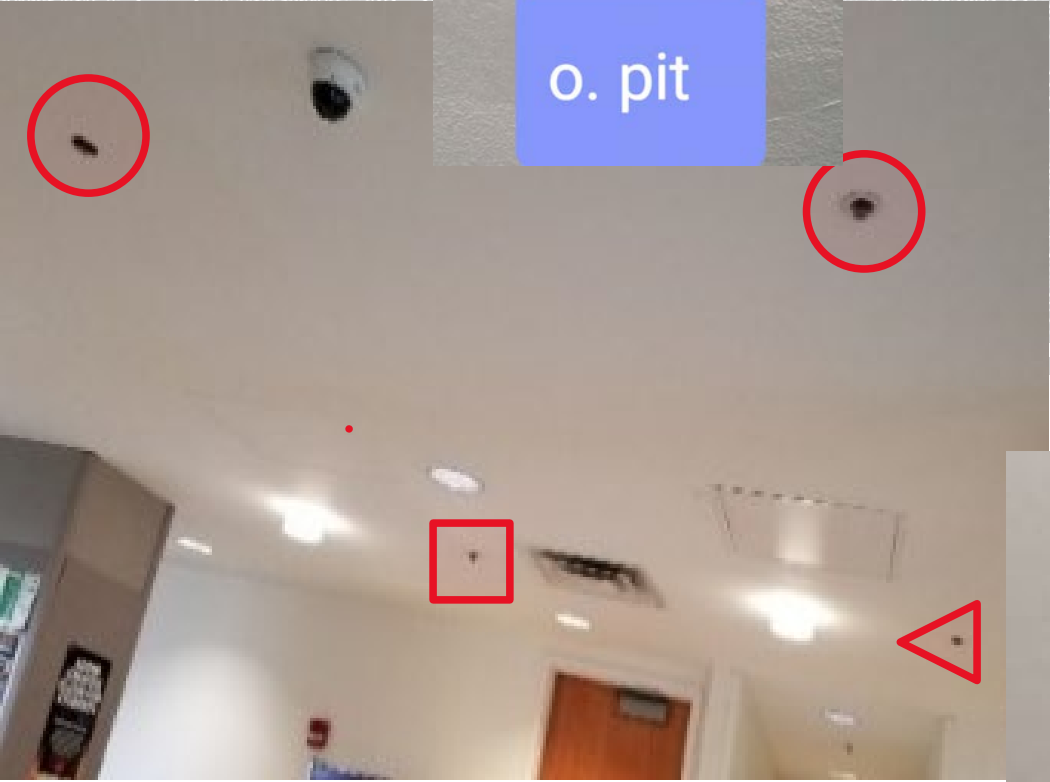


Outlet Cover Fix



COMMON CAMPUS FIRE CODE VIOLATIONS

Sprinkler rings and painted Sprinkler Heads, most prevalent in Commons and Dorms



COMMON CAMPUS FIRE CODE VIOLATIONS

The wrong kind of “Fire Stop” is really
“Fire Block”



No “Fire Stop”

Fireblock is a material whose main purpose is to slow air (oxygen) from feeding a fire

COMMON CAMPUS FIRE CODE VIOLATIONS

The Right kind of “Fire Stop”

3M® FB 136 Fire Block Sealant

or

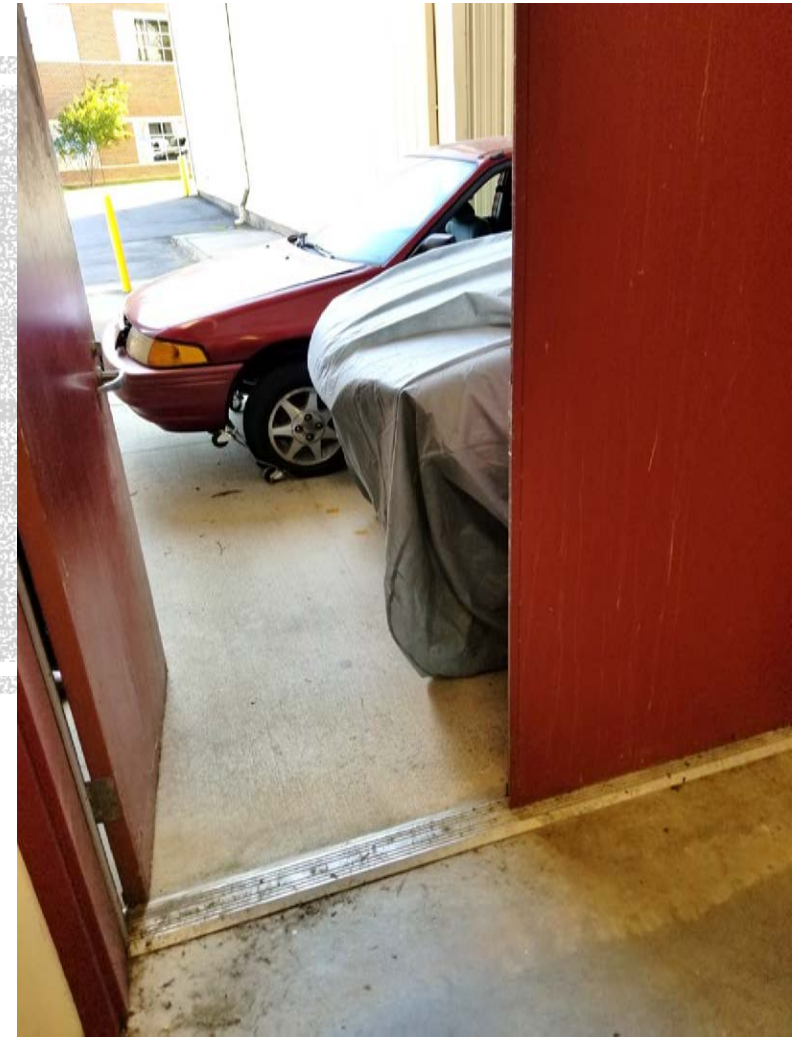
DAP® Fire Stop Fire-Rated
Silicone Sealant.



Firestop material is tested and approved for use, meant to protect rated penetrations by pipe, wire, etc. to the same degree as the fire-rated wall, ceiling or floor that is being penetrated.

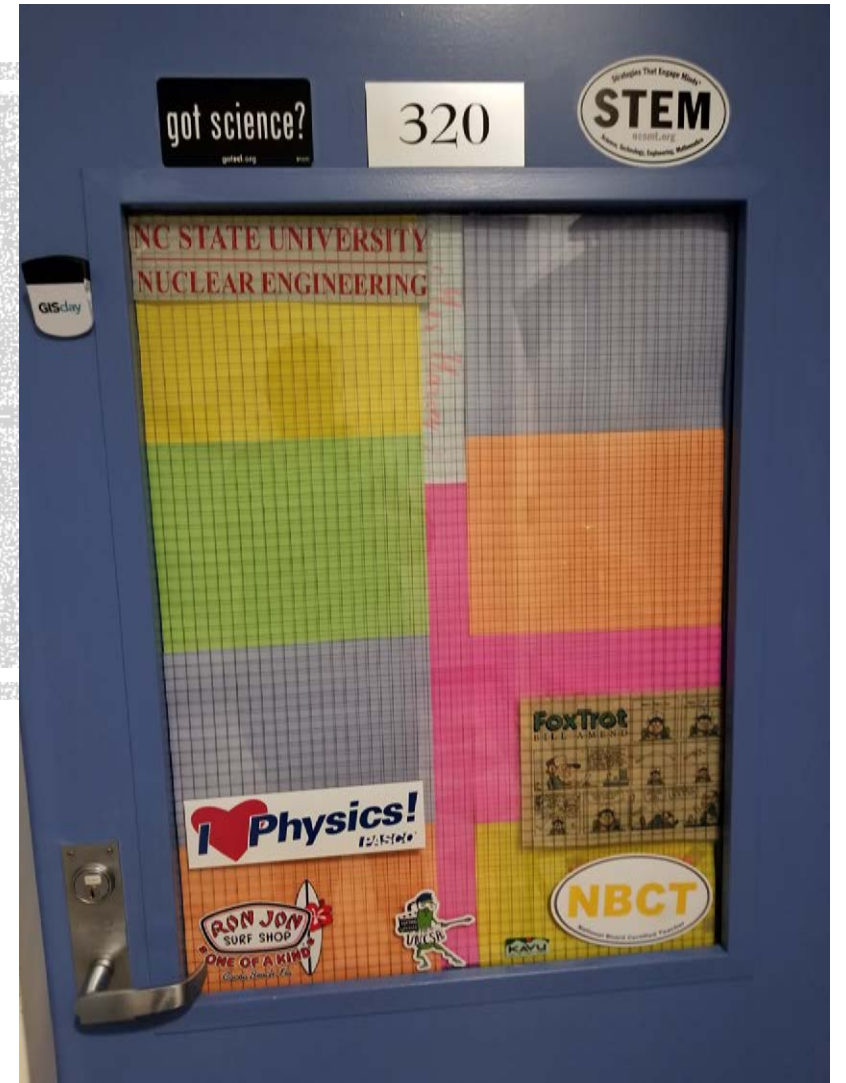
COMMON CAMPUS FIRE CODE VIOLATIONS

FIND THE HAZARD



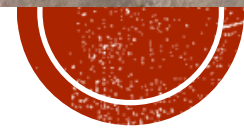
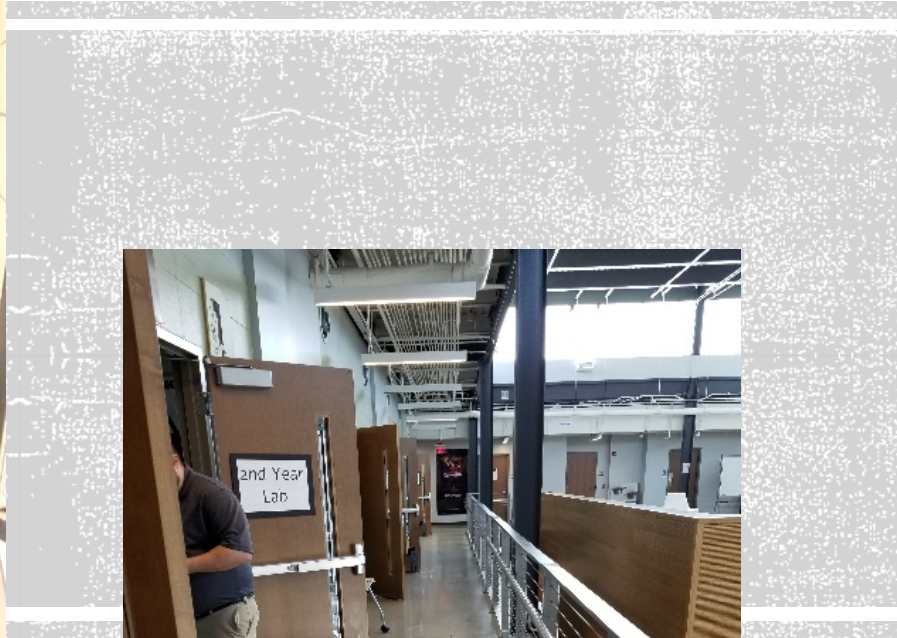
COMMON CAMPUS FIRE CODE VIOLATIONS

FIND THE HAZARD



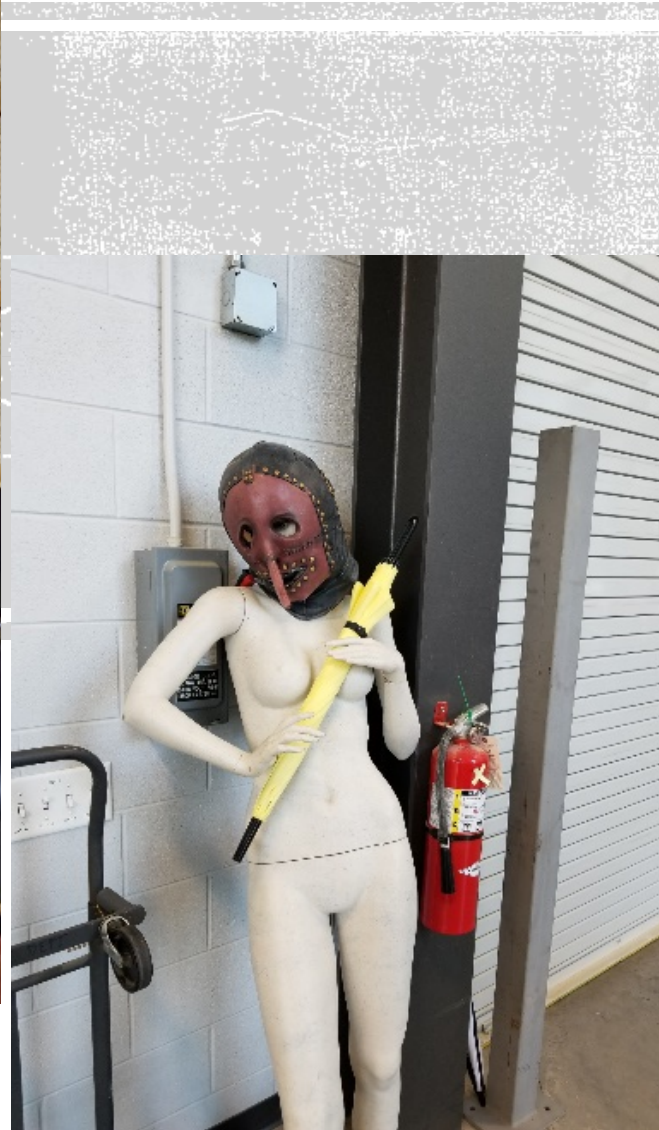
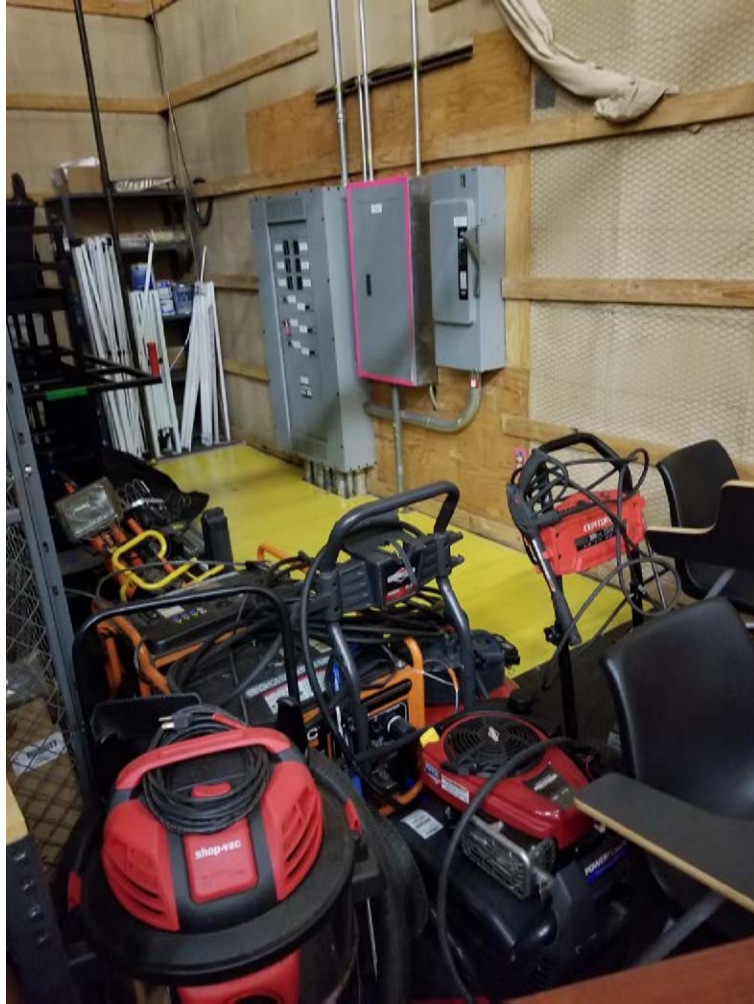
COMMON CAMPUS FIRE CODE VIOLATIONS

FIND THE HAZARD



COMMON CAMPUS FIRE CODE VIOLATIONS

FIND THE HAZARD



COMMON CAMPUS FIRE CODE VIOLATIONS

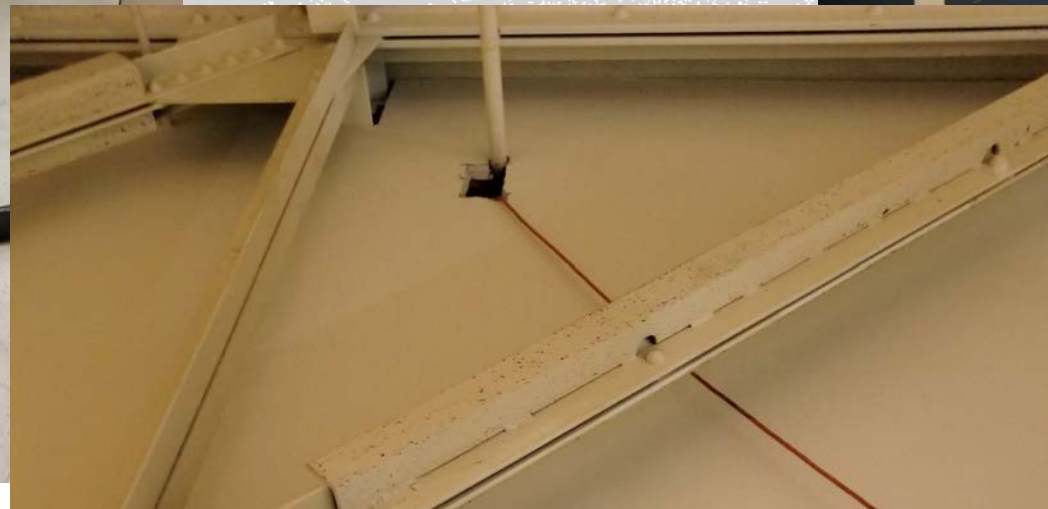
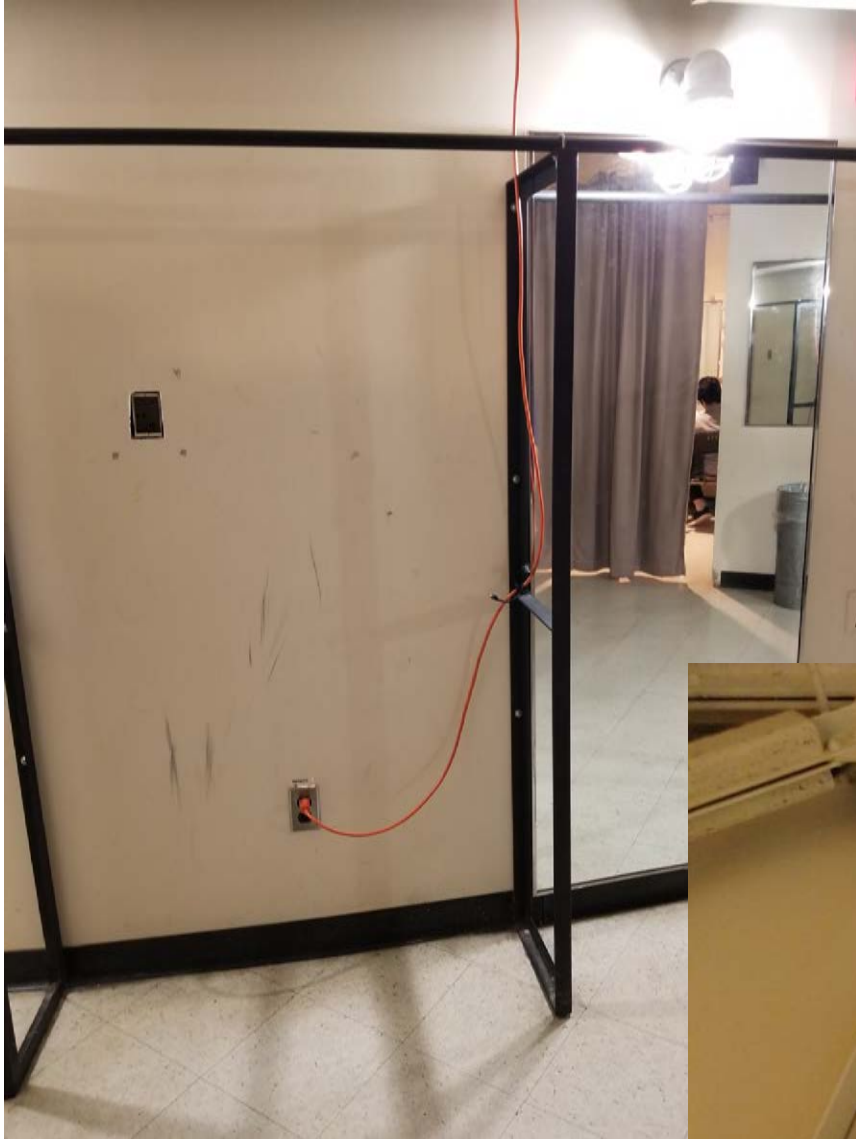
FIND THE HAZARD



back of Ace

COMMON CAMPUS FIRE CODE VIOLATIONS

FIND THE HAZARD



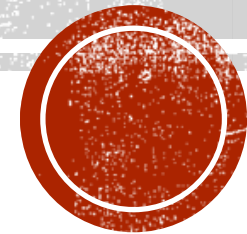
COMMON CAMPUS FIRE CODE VIOLATIONS

FIND THE HAZARD



COMMON CAMPUS FIRE CODE VIOLATIONS

FIND THE HAZARD



COMMON CAMPUS FIRE CODE VIOLATIONS
FIND THE HAZARD

